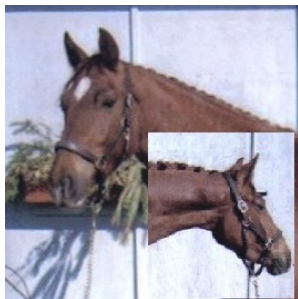


Video should be 3-5 minutes in length and include all portions in one video. Also, include a photo of height & cannon bone circumference measurements of the mare.

### HEAD PROFILE LEFT & RIGHT SIDE & FRONT



\*Front view of head clearly showing all markings.

\*Left side of head & neck / throatlatch connection

### BODY PROFILE—LEFT & RIGHT SIDE



\*Left side view of body , clearly showing all white markings.

\*Right side view of body, clearly showing all white markings

### FRONT & BACK VIEW—HEAD TO TOE



\*Front view of head to toe

\*Back view of hindquarters to back of hoof

### FRONT VIEW—KNEES TO FOOT



\*Front view of mid forearm to foot with feet and markings clearly visible

### BACK VIEW—HOCK TO FOOT



\*Back view from above hock to feet with markings clearly visible

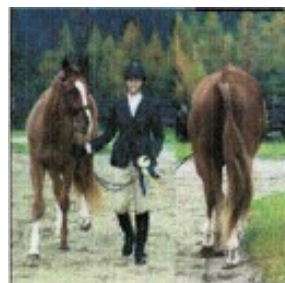
### WALK & TROT IN HAND—BOTH SIDE VIEWS



\*Walk in hand in both directions from the side

\*Trot in hand in both directions from the side

### WALK & TROT IN HAND—TOWARDS & AWAY



\*Walk in hand towards and away from camera

### AT LIBERTY—TROT & CANTER



\*At liberty -showing trot and canter