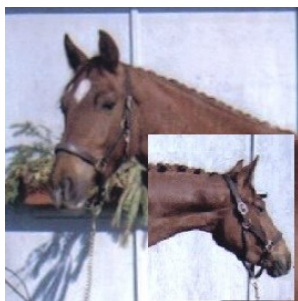


Video should be 3-5 minutes in length and include all portions in **one** video. Also, include a photo of height, heart girth & cannon bone circumference measurements of the mare.

HEAD PROFILE LEFT & RIGHT SIDE & FRONT



- *Front view of head clearly showing all markings.
- *Left side of head & neck / throatlatch connection
- *Show teeth /alignment

BODY PROFILE—LEFT & RIGHT SIDE



- *Left side view of body , clearly showing all white markings.
- *Right side view of body, clearly showing all white markings

FRONT & BACK VIEW—HEAD TO TOE



- *Front view of head to toe
- *Back view of hindquarters to back of hoof

FRONT VIEW—KNEES TO FOOT



- *Front view of mid forearm to foot with feet and markings clearly visible
- *With clear view of feet

BACK VIEW—HOCK TO FOOT



- *Back view from above hock to feet with markings clearly visible
- *With clear of feet

WALK & TROT IN HAND—BOTH SIDE VIEWS



- *Walk in hand in both directions from the side
- *Trot in hand in both directions from the side

WALK & TROT IN HAND—TOWARDS & AWAY



- *Walk in hand towards and away from camera
- * No further than 25 feet,
- *Videographer to follow or zoom in/out for clear shot

AT LIBERTY—TROT & CANTER



- *At liberty -showing trot and canter